



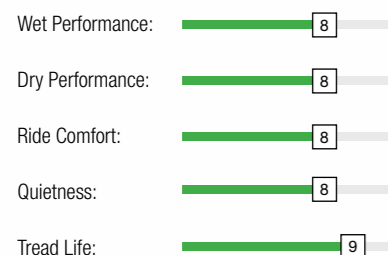
HIGH PERFORMANCE TYRE



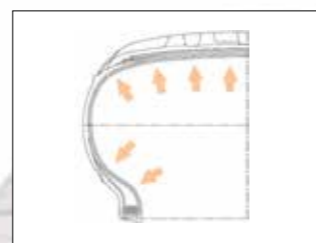
ATREZZO ECO



PERFORMANCE RATINGS:



Three wide main grooves and small lateral grooves that run through the sidewall effectively enhance wet grip and improve hydroplaning resistance.



► Adjusted the internal structure of the tyre to optimise the distribution of contact stress which improves comfort and lowers rolling resistance.



Added a lightning pattern in the tread for greater aesthetics.



Two centre ribs and reinforced grooves help improve tyre rigidity for excellent handling. Effectively reduces rolling resistance and improves fuel economy.



Solid large block shoulder design provides exceptional grip to ensure vehicle stability.

Rim	SIZE	LI	SR	XL	Labelling	Tread Depth (mm)	Standard RIM (inch)	Section Width (mm)	Overall Diameter (mm)	Max Load (kg)	Pressure (kPa)	SW	Rim Protector
13	155/80R13	79	T	-	F/B/70/2	7.4	8J	157	578	437	300	BSW	NO
13	165/80R13	83	T	-	E/B/70/2	7.4	7 1/2J	165	594	487	300	BSW	NO
13	155/70R13	75	T	-	F/B/70/2	7.4	8J	157	548	387	300	BSW	NO
13	165/70R13	79	T	-	E/B/70/2	7.4	8J	170	562	437	300	BSW	NO
13	175/70R13	82	T	-	E/B/70/2	7.4	7J	177	576	475	300	BSW	NO
13	185/70R13	86	T	-	E/B/70/2	7.4	8J	189	590	530	300	BSW	NO
13	155/65R13	73	T	-	E/B/70/2	7.4	7J	157	532	365	300	BSW	NO
13	165/65R13	77	T	-	E/B/70/2	7.4	7J	170	544	412	300	BSW	NO
13	175/65R13	80	T	-	E/B/70/2	7.4	6 1/2J	177	558	450	300	BSW	NO
14	175/80R14	88	T	-	E/B/70/B	7.4	7J	177	636	560	300	BSW	NO
14	165/70R14	81	T	-	E/B/70/2	7.4	7J	170	588	462	300	BSW	NO
14	165/70R14	85	T	XL	E/B/70/2	7.4	7 1/2J	170	588	515	340	BSW	NO
14	175/70R14	84	T	-	E/B/70/2	7.4	8J	177	602	500	300	BSW	NO
14	175/70R14	88	T	XL	E/B/70/2	7.4	8 1/2J	177	602	560	340	BSW	NO
14	185/70R14	88	T	-	E/B/70/2	7.4	4.50B	189	616	560	300	BSW	NO
14	185/70R14	88	H	-	E/B/70/2	7.4	4.50B	189	616	560	300	BSW	NO
14	195/70R14	91	H	-	E/B/70/2	7.4	4.50B	201	630	615	300	BSW	NO
14	155/65R14	75	T	-	E/B/70/2	7.4	5.00B	157	558	387	300	BSW	NO
14	165/65R14	79	T	-	E/B/70/2	7.4	5.00B	170	570	437	300	BSW	NO
14	175/65R14	82	T	-	E/B/70/2	7.4	5.50B	177	584	475	300	BSW	NO
14	175/65R14	82	H	-	E/B/70/2	7.4	4.50B	177	584	475	300	BSW	NO
14	175/65R14	86	T	XL	E/B/70/2	7.4	5.00B	177	584	530	340	BSW	NO
14	185/65R14	86	H	-	E/B/70/2	7.4	5.00B	189	596	530	300	BSW	NO
14	185/65R14	86	T	-	E/B/70/2	7.4	5J	189	596	530	300	BSW	NO
14	195/65R14	89	H	-	C/B/70/2	7.4	5J	201	610	580	300	BSW	NO
14	165/60R14	75	H	-	E/B/70/2	7.4	5J	170	554	387	300	BSW	NO
14	165/60R14	75	T	-	E/B/70/2	7.4	5J	170	554	387	300	BSW	NO
14	185/60R14	82	H	-	E/B/70/2	7.4	5J	189	578	475	300	BSW	NO
14	165/55R14	72	V	-	E/B/70/2	7.4	5J	170	538	355	300	BSW	NO
15	145/65R15	72	T	-	F/B/70/2	7	5 1/2J	150	569	355	300	BSW	NO
15	165/65R15	81	T	-	E/B/70/2	7.4	5 1/2J	170	595	462	300	BSW	NO
15	165/65R15	81	H	-	E/B/70/2	7.4	6J	170	595	462	300	BSW	NO
15	175/65R15	84	H	-	E/B/70/2	7.4	4 1/2J	177	609	500	300	BSW	NO
15	175/65R15	88	T	XL	C/B/70/2	7.4	5J	177	609	560	340	BSW	NO
15	175/65R15	88	H	XL	C/B/70/2	7.4	5J	177	609	560	340	BSW	NO
15	155/60R15	74	T	-	E/B/70/2	7.4	5J	157	567	375	300	BSW	NO
15	175/60R15	81	V	-	E/B/70/2	7.4	5J	177	591	462	300	BSW	NO
15	175/60R15	81	H	-	E/B/70/2	7.4	5 1/2J	177	591	462	300	BSW	NO
15	175/55R15	77	T	-	E/B/70/2	7.4	5 1/2J	182	573	412	300	BSW	NO
15	165/55R15	75	V	-	E/B/70/2	7.4	6J	170	563	387	300	BSW	NO
15	165/50R15	72	V	-	E/B/70/2	7.4	7J	170	547	355	300	BSW	NO